



TRAKTOR KONTROL S2



Setup Guide



The information in this document is subject to change without notice and does not represent a commitment on the part of Native Instruments GmbH. The software described by this document is subject to a License Agreement and may not be copied to other media. No part of this publication may be copied, reproduced or otherwise transmitted or recorded, for any purpose, without prior written permission by Native Instruments GmbH, hereinafter referred to as Native Instruments.

“Native Instruments”, “NI” and associated logos are (registered) trademarks of Native Instruments GmbH.

Mac, Mac OS, GarageBand, Logic, iTunes and iPod are registered trademarks of Apple Inc., registered in the U.S. and other countries.

Windows, Windows Vista and DirectSound are registered trademarks of Microsoft Corporation in the United States and/or other countries.

All other trade marks are the property of their respective owners and use of them does not imply any affiliation with or endorsement by them.

Document authored by: Native Instruments GmbH

Version: 04/2012

Special thanks to the Beta Test Team, who were invaluable not just in tracking down bugs, but in making this a better product.

Germany

Native Instruments GmbH
Schlesische Str. 29-30
D-10997 Berlin
Germany
www.native-instruments.de

USA

Native Instruments North America, Inc.
6725 Sunset Boulevard
5th Floor
Los Angeles, CA 90028
USA
www.native-instruments.com



© Native Instruments GmbH, 2012. All rights reserved.

Table of Contents

1	Welcome to TRAKTOR KONTROL S2!	7
1.1	What Is Included In the Box?	7
1.2	About this Setup Guide	7
1.3	Document Conventions	8
2	Setup Overview	9
3	Software Installation	10
3.1	Read Before Installing	10
3.2	Installation on Mac OS X	10
3.2.1	Locate and Start the Installation Program	10
3.2.2	Select the Components to Install	11
3.2.3	Enter Your Password	13
3.2.4	Complete the Installation	14
3.3	Installation on Windows	15
3.3.1	Locate and Start the Installation Program	15
3.3.2	Confirm the Features to Install	15
3.3.3	Confirm the Application Installation Path	17
3.3.4	Select Your Hardware Drivers	18
3.3.5	Complete the Software Installation	18
4	Product Activation with Service Center	20
4.1	Activating Your Product Online	20
4.1.1	Start Service Center	20
4.1.2	Log In Into Your User Account	21
4.1.3	Activate the Product	22
4.1.4	Finish the Online Activation	23
4.2	Updating Your Product	24
4.2.1	Select Updates	24

4.2.2	Download the Updates	25
4.2.3	Open Your Download Folder	26
4.2.4	Install Updates	27
4.3	Activating Your Product Offline	27
4.3.1	Start the Offline Activation	28
4.3.2	Create the Activation Request File	29
4.3.3	Enter the Serial Number	30
4.3.4	Transfer the Activation Request File	31
4.3.5	Open the Activation Return File	32
4.3.6	Finish the Offline Activation	33
5	Setting Up Your TRAKTOR KONTROL S2 System	34
5.1	Connecting the TRAKTOR KONTROL S2 Controller	34
5.1.1	Prepare the Power Supply	34
5.1.2	Connect the Power Supply	35
5.1.3	Connect the TRAKTOR KONTROL S2 Controller to Your Computer	36
5.2	Turning On the TRAKTOR KONTROL S2 Controller	38
5.3	Connecting Headphones	39
5.4	Connecting the Amplification System	40
6	Soundcheck	43
6.1	Starting the TRAKTOR Software	43
6.2	Configuring TRAKTOR with the Setup Wizard	43
6.3	Loading a Track Into a Deck	46
6.4	Playing the Track on Your Speakers	47
6.5	Pre-listening to a Second Track on Your Headphones	49
7	How to Proceed	52
7.1	Documentation Resources	52
7.1.1	PDF Manuals	52
7.1.2	Overview Poster	52

7.1.3	Video Tutorials	53
7.2	Support	53
7.2.1	Knowledge Base / Readme / Online Support	53
7.2.2	Forum	54
7.3	Updates	54
8	Troubleshooting and FAQ	55
8.1	Installation Folder Not Found by an Update Installer	55
8.2	User Account Control and Internet Security	55
8.3	Audio Clicks and Drop-outs when Playing Tracks	56
8.4	More Troubleshooting Resources	56

1 Welcome to TRAKTOR KONTROL S2!

1.1 What Is Included In the Box?

The TRAKTOR KONTROL S2 box contains the following:

- The TRAKTOR KONTROL S2 controller
- A power supply and region adapters
- A USB cable
- A registration flyer with your TRAKTOR PRO 2 software serial number, your TRAKTOR KONTROL S2 hardware serial number, and a link to the hardware registration page, where you can register your hardware and download the TRAKTOR software
- A double-sided overview poster
- A TRAKTOR keyboard shortcut overview card
- A safety instructions flyer
- A TRAKTOR sticker sheet

1.2 About this Setup Guide

This document will guide you through the basic steps of setting up your TRAKTOR KONTROL S2 system. After reading it, you should be able to start using your TRAKTOR KONTROL S2 controller with the TRAKTOR PRO 2 software. We recommend that you take the time to read this guide in its entirety.

1.3 Document Conventions

This section introduces you to the signage and text highlighting used in this document. This document uses particular formatting to point out special facts and to warn you of potential issues. The icons introducing these notes let you see what kind of information is to be expected:



Whenever this exclamation mark icon appears, you should read the corresponding note carefully and follow the instructions and hints given there if applicable.



This light bulb icon indicates that a note contains useful extra information. This information may often help you to solve a task more efficiently, but does not necessarily apply to the setup or operating system you are using; however, it's always worth a look.

Furthermore, the following formatting is used:

- Text appearing in (drop-down) menus (such as *Open...*, *Save as...* etc.) and paths to locations on your hard drive or other storage devices is printed in *italics*.
 - Text appearing elsewhere (labels of buttons, controls, text next to checkboxes etc.) is printed in **blue**. Whenever you see this formatting applied, you will find the same text appearing somewhere on the screen.
 - Important names and concepts are printed in **bold**.
 - References to keys on your computer's keyboard you'll find put in square brackets (e.g., "Press [Shift] + [Return]").
- Single instructions are introduced by this play button type arrow.
- Results of actions are introduced by this smaller arrow.

2 Setup Overview

This section provides a quick overview of the various steps required to get your TRAKTOR KONTROL S2 system up and running: **hardware registration** and **software download, installation, activation, updates**, and **configuration**.

- **Hardware registration** and **software download**: Register your hardware and download the TRAKTOR software installer as instructed on: www.native-instruments.com/go-s2.
- **Software installation**: locate the downloaded setup file on your computer and double-click it to start the installation procedure. Carefully read and follow the on-screen instructions, accept the license agreements, and enter the password for your computer if prompted (Mac OS X only).
- **Activation**: Activate your product using the Service Center application. Online and offline activation methods are available.
- **Update**: Download the latest software updates using the Service Center application. Then browse to the download folder and install all downloaded updates.
- **Hardware installation**: Attach the TRAKTOR KONTROL S2 controller to your computer as explained later in this document.
- **Configuration**: Connect external devices such as headphones and active speakers.

Suggestions for further reading as well as tips for troubleshooting and FAQs can be found in the subsequent chapters of this guide.

3 Software Installation

3.1 Read Before Installing

Before starting the TRAKTOR software installer, here are some points to be aware of:

- Make sure you have downloaded the TRAKTOR software to your computer by following the instructions on the registration page:
www.native-instruments.com/go-s2
If you have already registered your device but need to download the installer again, you can find the relevant downloads in the "My Account" section of the NI website:
<https://www.native-instruments.com/en/my-account/my-products-serials>
- Please **carefully review the installer screens** and the suggested installation paths in order to avoid that any unwanted folders are created on your hard disk.
- **Moving any folders** related to Native Instruments software after installation **is not recommended**. Future software updates rely on the directory locations set during initial installation.

3.2 Installation on Mac OS X



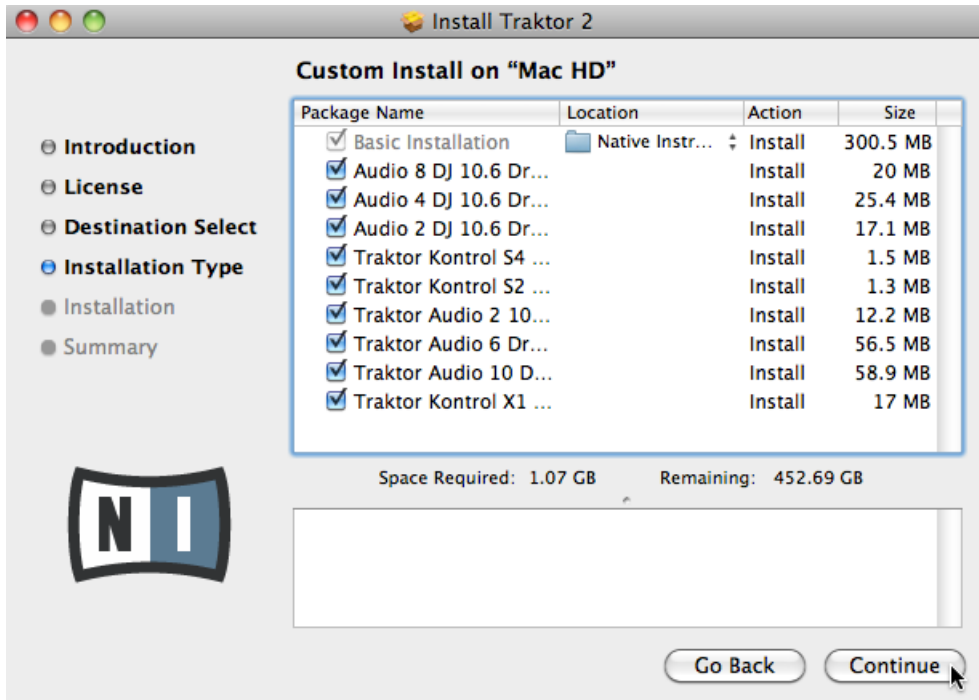
At the end of the installation process you will need to restart your computer. Please save your work and close all applications before proceeding.

3.2.1 Locate and Start the Installation Program

1. Locate and unpack the downloaded installer package file on your computer.
2. Double-click the **Traktor 2 Installer.mpkg** file to start the installation procedure.
3. Follow the on-screen instructions.

3.2.2 Select the Components to Install

After you have accepted the software license agreement, the installer window displays the components available for installation. This installer screen also contains information about how much disk space the individual components will use.



The components selection screen of the installation program.



It is recommended to keep all features selected unless you have a specific reason to deselect a feature (such as if this feature is already installed on your computer, or you know for sure you will not use the device).

Basic Installation: This installs the TRAKTOR software along with its documentation. This component cannot be deselected. It also installs the Service Center application (required for activation of your product) and the Controller Editor application, which allows you to configure the controller's MIDI assignments for using the controller with other applications than the included software.

Audio 8/4/2 DJ Drivers: This installs drivers for the AUDIO 8 DJ, AUDIO 4 DJ and AUDIO 2 DJ audio interfaces by Native Instruments. If you do not intend to use any of these audio interfaces, you can deactivate the checkboxes.

Traktor Kontrol S4: This installs the driver for the TRAKTOR KONTROL S4 controller. If you do not intend to use a TRAKTOR KONTROL S4 controller on your computer, you can deactivate the checkbox.

Traktor Kontrol S2: This installs the driver for your TRAKTOR KONTROL S2 controller. **Make sure this component is selected** as the controller will not work properly without its driver installed.

Traktor Audio 2/6/10 Drivers: This installs drivers for the TRAKTOR AUDIO 2, TRAKTOR AUDIO 6 and TRAKTOR AUDIO 10 audio interfaces by Native Instruments.

Traktor Kontrol X1: This installs the driver for the TRAKTOR KONTROL X1 DJ controller. If you do not intend to use a TRAKTOR KONTROL X1 controller on your computer, you can deactivate the checkbox.

Background Components

These components are not displayed in the installer window, but are installed depending on your system configuration:

Controller Editor: The Controller Editor application allows you to configure your Native Instruments hardware controller (e.g., TRAKTOR KONTROL S4 or X1) for use as a MIDI controller with applications other than the TRAKTOR software. This component will automatically be installed if you install one of the controller drivers (unless a newer version of Controller Editor already exists on your computer).

Service Center: The Service Center application is required for activation of the TRAKTOR software. It will be installed independent of the selected drivers (unless a newer version of Service Center already exists on your computer).

Control Panel: The Control Panel is an audio settings configuration tool, installed with the driver of the TRAKTOR KONTROL S2, and it allows for settings relating to the controller's built-in audio interface. For further information on the Control Panel, please consult the TRAKTOR KONTROL S2 Manual.



It is strongly recommended to install the TRAKTOR software to the default location. If you still need to change the install location, click on the folder icon in the [Location](#) column and select the desired folder.

- After you have customized the installation as required, click [Continue](#) and then follow the on-screen instructions.

3.2.3 Enter Your Password

Before installing the selected components, the installer will prompt you to enter your Mac OS X password. This is a standard behavior on Mac OS X that makes sure you are aware of the changes the installer is about to make.



The Mac OS X user account you are using needs to have Administrator privileges.

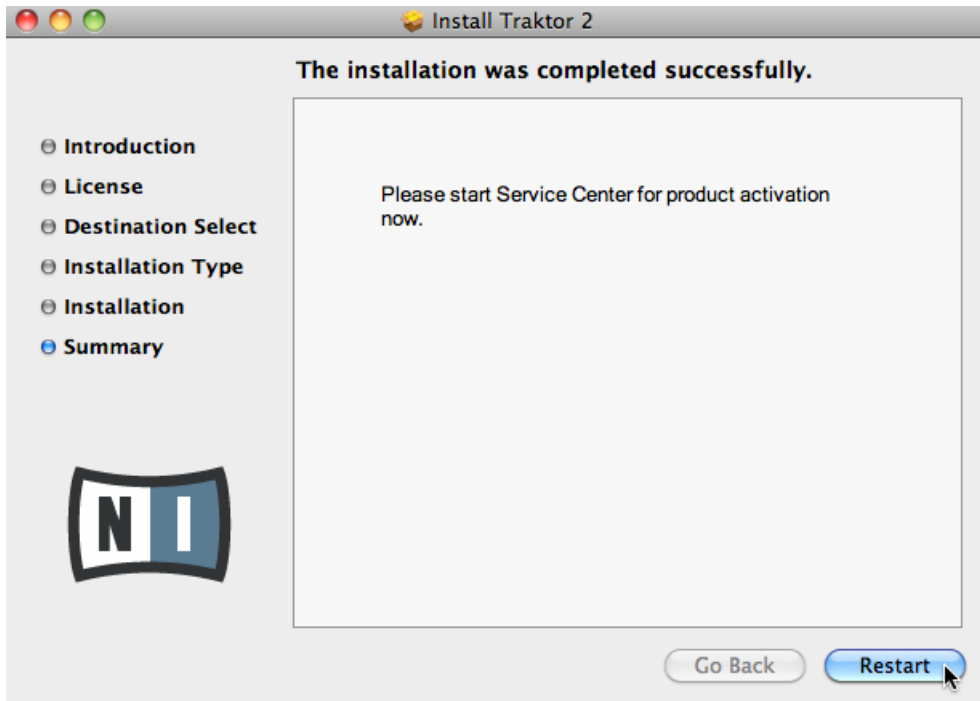


The Mac OS X password prompt.

- To proceed, enter your password and click [OK](#).
- The selected components will be installed.

3.2.4 Complete the Installation

After the components have been installed, you need to restart your computer.



The final screen of the installation program.

- ▶ On the last screen of the installation program, click [Restart](#) to restart your computer and complete the software installation.
- Your computer will immediately restart.
- ▶ After your computer has restarted, continue reading in chapter [↑4, Product Activation with Service Center](#) of this Setup Guide for information about product activation.

3.3 Installation on Windows



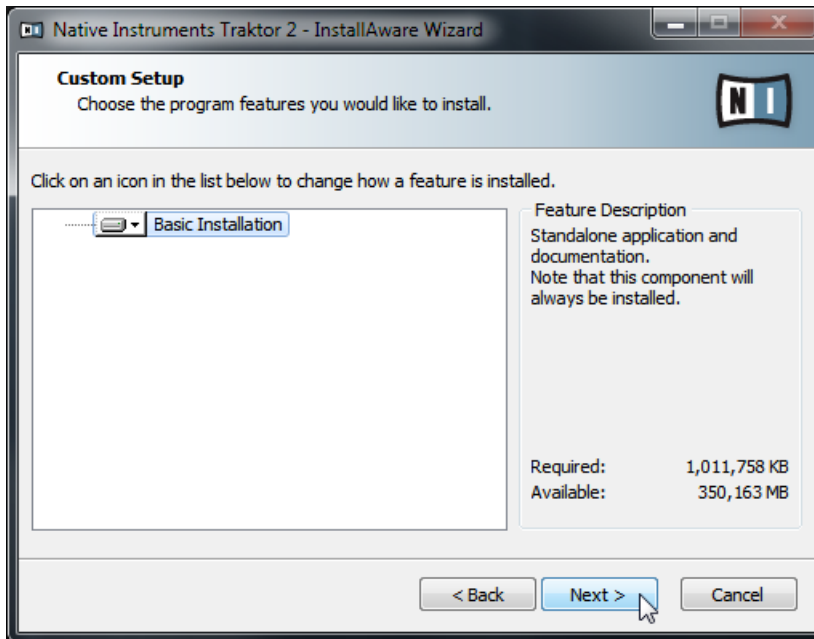
If you are installing the TRAKTOR software on Windows Vista or Windows 7, you may need to turn off Windows User Account Control (UAC) before you can proceed. See chapter [↑8.2, User Account Control and Internet Security](#) in this Setup Guide for detailed information on how to turn off UAC. In addition to this, it may be necessary to disable your anti-virus software during installation.

3.3.1 Locate and Start the Installation Program

1. Locate and unpack the downloaded installer package file on your computer.
2. Double-click the **Traktor 2 Setup.exe** file to start the installation procedure.
3. Follow the on-screen instructions.

3.3.2 Confirm the Features to Install

After you have accepted the software license agreement, the installer window displays the features available for installation.



The components selection screen of the installation program.

Basic Installation: This is the dedicated TRAKTOR software for your TRAKTOR KONTROL S2 system, along with its documentation. This component cannot be deselected.

Background Components

These features are not displayed in the installer window, but are installed depending on your system configuration:

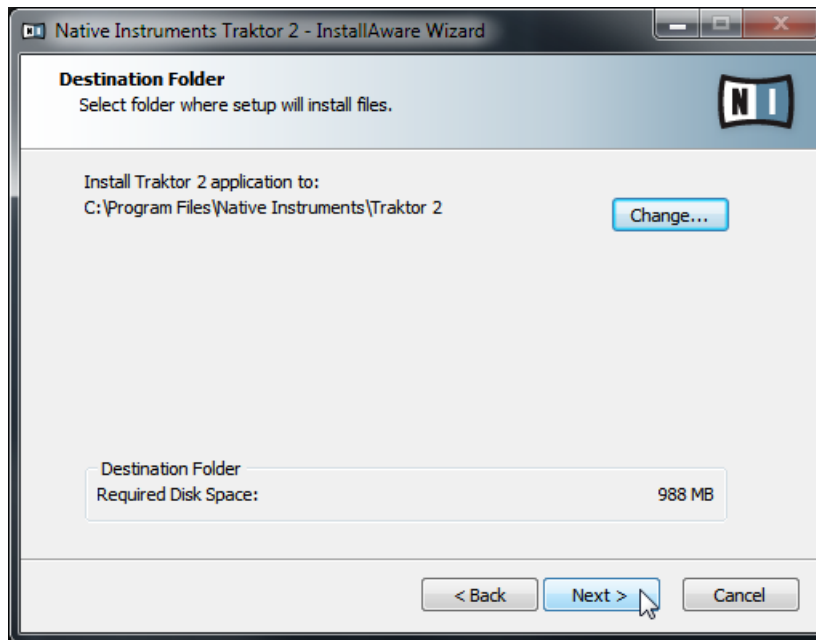
Controller Editor: The Controller Editor application allows you to configure your Native Instruments hardware controller (e.g., TRAKTOR KONTROL S4 or X1) for use as a MIDI controller with applications other than the TRAKTOR software. This component will automatically be installed if you install one of the controller drivers (unless a newer version of Controller Editor already exists on your computer).

Service Center: The Service Center application is required for activation of the TRAKTOR software. It will be installed independent of the selected drivers (unless a newer version already exists on your computer).

Control Panel: The Control Panel is an audio settings configuration tool, installed with the driver of the TRAKTOR KONTROL S2, and it allows for settings concerning the controller's built-in audio interface. For further information on the Control Panel, please consult the TRAKTOR KONTROL S2 Manual.

- Click [Continue](#) and then follow the on-screen instructions.

3.3.3 Confirm the Application Installation Path



The software installation path screen of the installation program.



It is strongly recommended to install the TRAKTOR software to the default location. If you still need to change the install location, click [Change](#) to open a Folder Selection dialog and select the desired destination folder.

You will be asked to select and confirm an installation path for the TRAKTOR software.

- Click [Next](#) to proceed.

3.3.4 Select Your Hardware Drivers

After defining/confirming the program's installation path, you will be presented with a number of driver selection screens. It is recommended to select all drivers from the driver selection screens unless you have a specific reason to deselect a driver (such as if this driver is already installed on your computer, or if you are very sure about which drivers you need and which ones you don't).

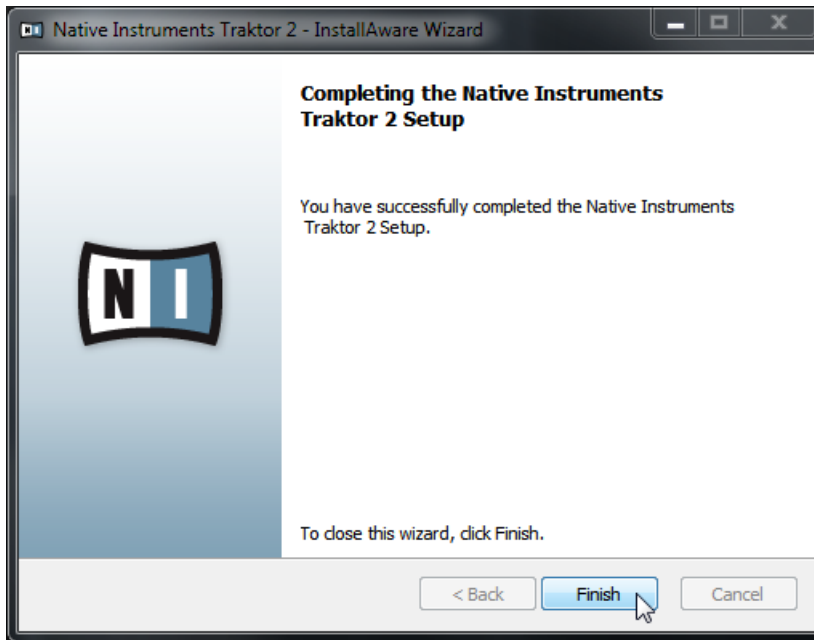


The Driver Selection screen holding the S2 driver selection.

1. Make sure to select the TRAKTOR KONTROL S2 driver from the relevant Driver Selection screen.
2. Click [Next](#) to proceed.

3.3.5 Complete the Software Installation

Once you have selected the required driver(s) and confirmed your selection, you will be forwarded to the last screen of the installation program.



The final screen of the installation program.

- ▶ On the last screen of the installation program, click [Finish](#) to complete the installation and exit the installation program.
- ▶ Continue reading in chapter [↑4, Product Activation with Service Center](#) of this Setup Guide for information about product activation.

4 Product Activation with Service Center



This section uses a placeholder name ("NI Product") on all screenshots. The relevant section on your screen will display the name of the Native Instruments product you are activating.

4.1 Activating Your Product Online



Skip to chapter [↑4.3, Activating Your Product Offline](#) if your computer is not connected to the Internet.

4.1.1 Start Service Center

1. Locate the Service Center application on your hard disk. During installation, a folder labeled **Native Instruments** was created in the Applications (Mac OS X) / Program Files (Windows) folder. Within this folder, a subfolder labeled **Service Center** holds the corresponding application.
2. Double-click the Service Center application to start the activation procedure.



It is necessary to activate your Native Instruments product in order to use its full functionality.

4.1.2 Log In Into Your User Account

SERVICE CENTER

Log in

Please log in using your e-mail address and password.

E-mail address

Password

☐ Log me in automatically on next startup

› Forgot your password?

› Create new User Account

▶ Log in

Status:
Online

The log-in screen of Service Center.

- ▶ Log in with your e-mail address and Native Instruments password.
- ▶ If you do not have a Native Instruments account yet, click on [Create new User Account](#). Fill in the address form. The password will be sent to you via e-mail.

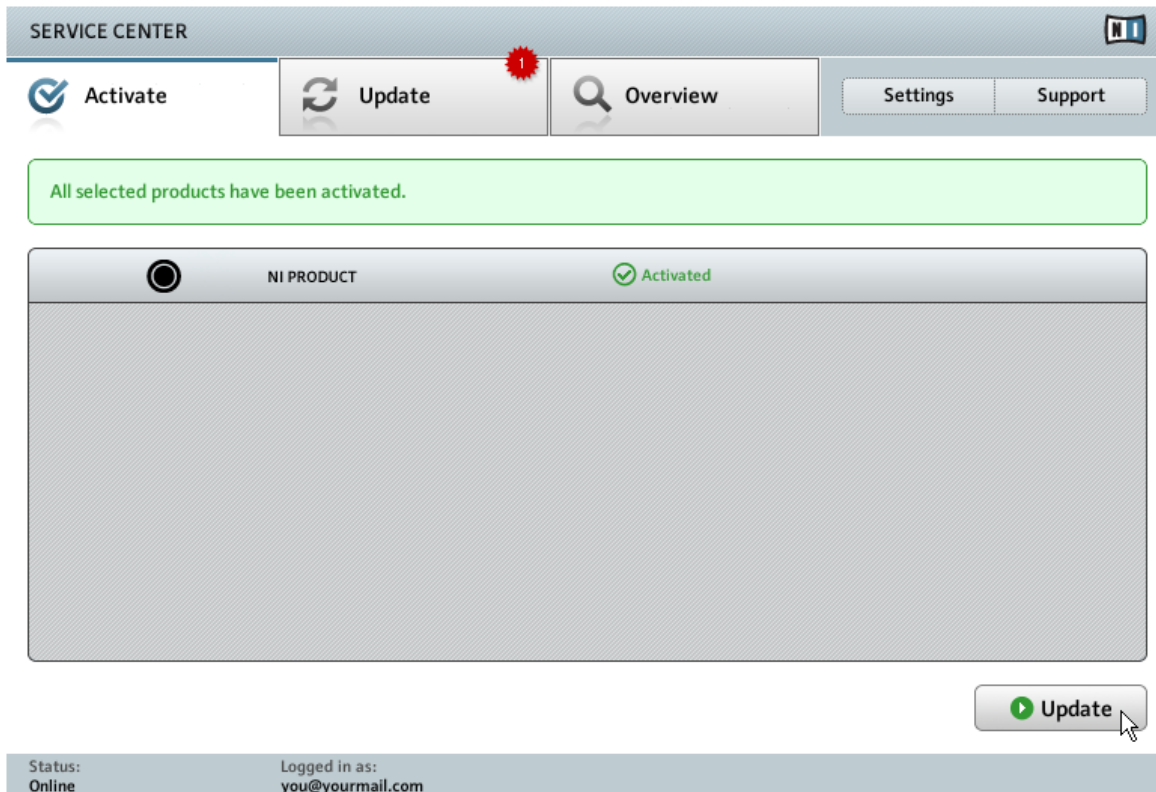
4.1.3 Activate the Product

The screenshot shows the 'SERVICE CENTER' interface. At the top, there's a navigation bar with 'Activate' (highlighted with a checkmark icon), 'Update' (refresh icon), 'Overview' (magnifying glass icon), 'Settings', and 'Support'. Below this is a yellow instruction box: 'Enter the serial numbers for the products you want to activate.' The main area contains a window titled 'NI PRODUCT' with a header bar showing a power button, the title, and several input fields. The first three fields contain serial numbers: '1796', '99017', and '09'. The rest of the window is a large grey area. At the bottom right of this area is a green 'Activate' button with a checkmark icon. A status bar at the very bottom shows 'Status: Online' and 'Logged in as: you@yourmail.com'.

The product activation screen of Service Center.

1. Enter the software serial number in the number field. The software serial number is located on the registration flyer, which you can find in your TRAKTOR KONTROL S2 product box.
2. Click [Activate](#) to proceed.

4.1.4 Finish the Online Activation



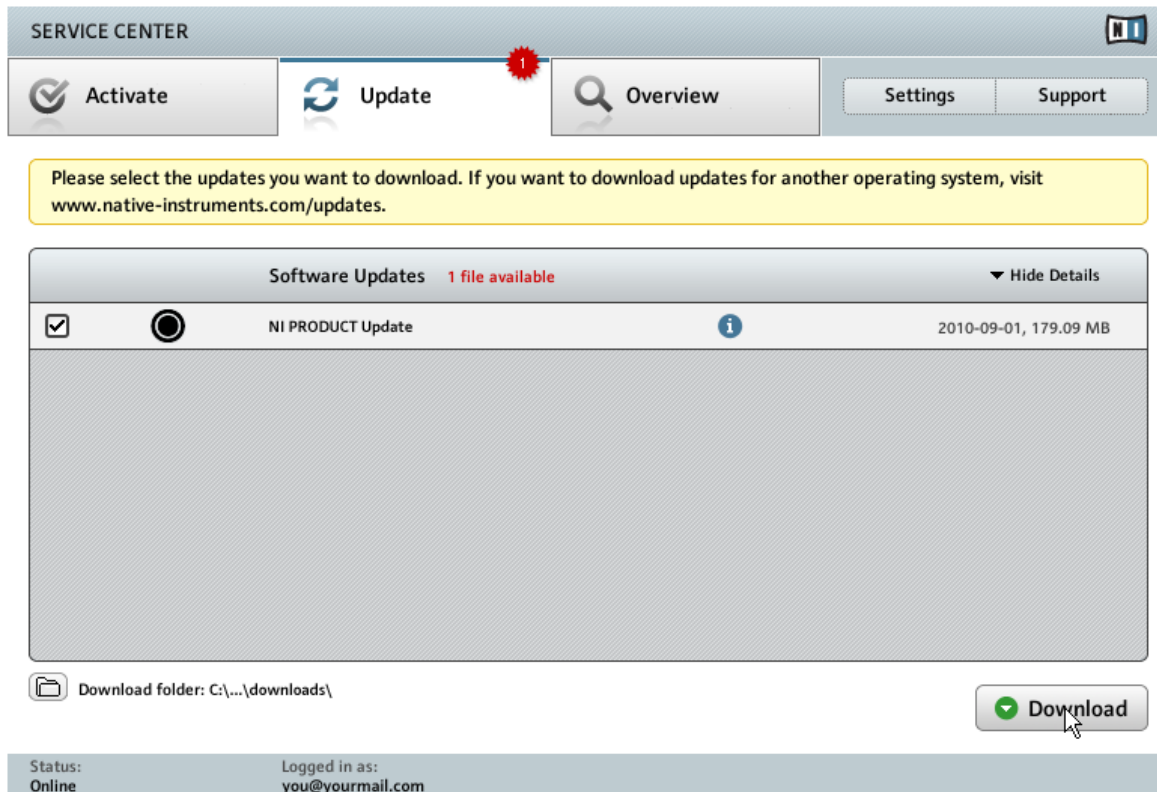
Service Center confirming the product activation.

Service Center confirms that the product has been activated successfully. A search for updates will start automatically.

- If updates for any of the activated products are available, the button in the bottom right corner of the screen reads [Update](#). To download the updates, click the [Update](#) button and proceed with chapter [↑4.2, Updating Your Product](#).
- If no updates are available, the button in the bottom right corner of the screen reads [Exit](#). You can click it to close Service Center.

4.2 Updating Your Product

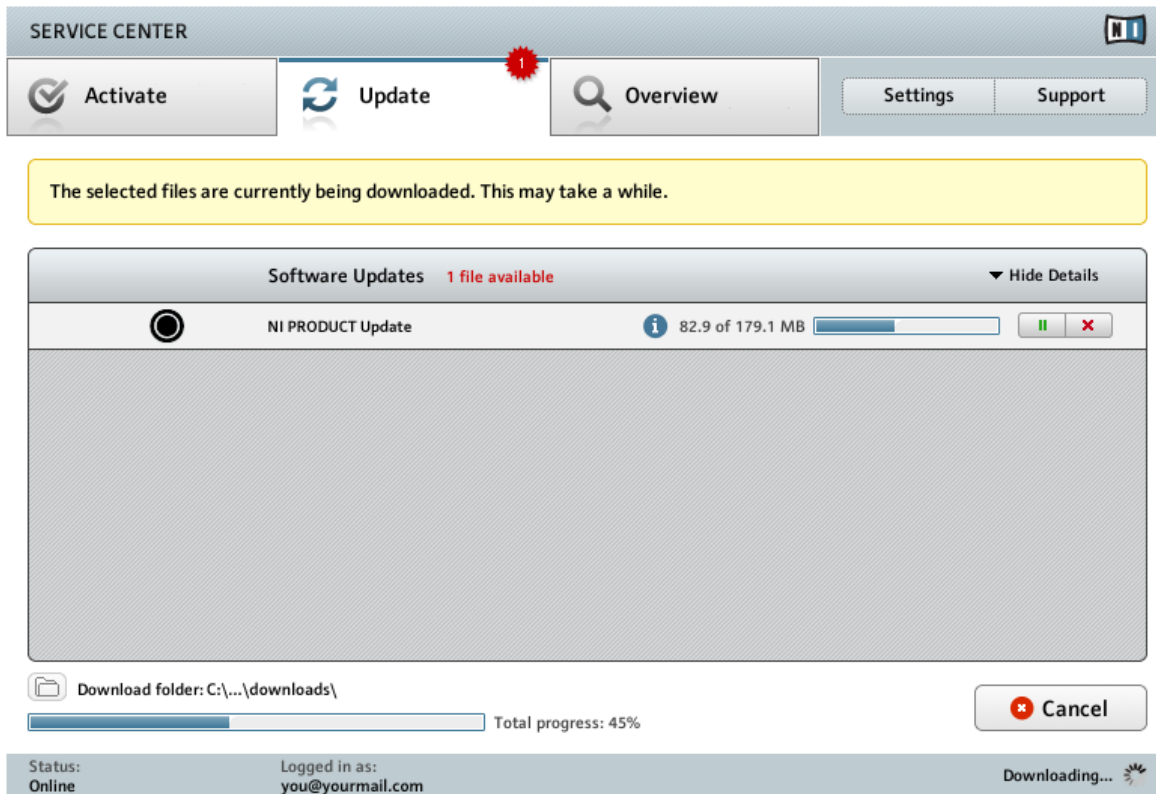
4.2.1 Select Updates



The product update screen of Service Center.

1. In Service Center, click the [Update](#) tab to view a list of available updates.
2. Select the updates you want to download by checking the checkboxes on the left. We recommend downloading all preselected updates.
3. Click [Download](#). The download will start.

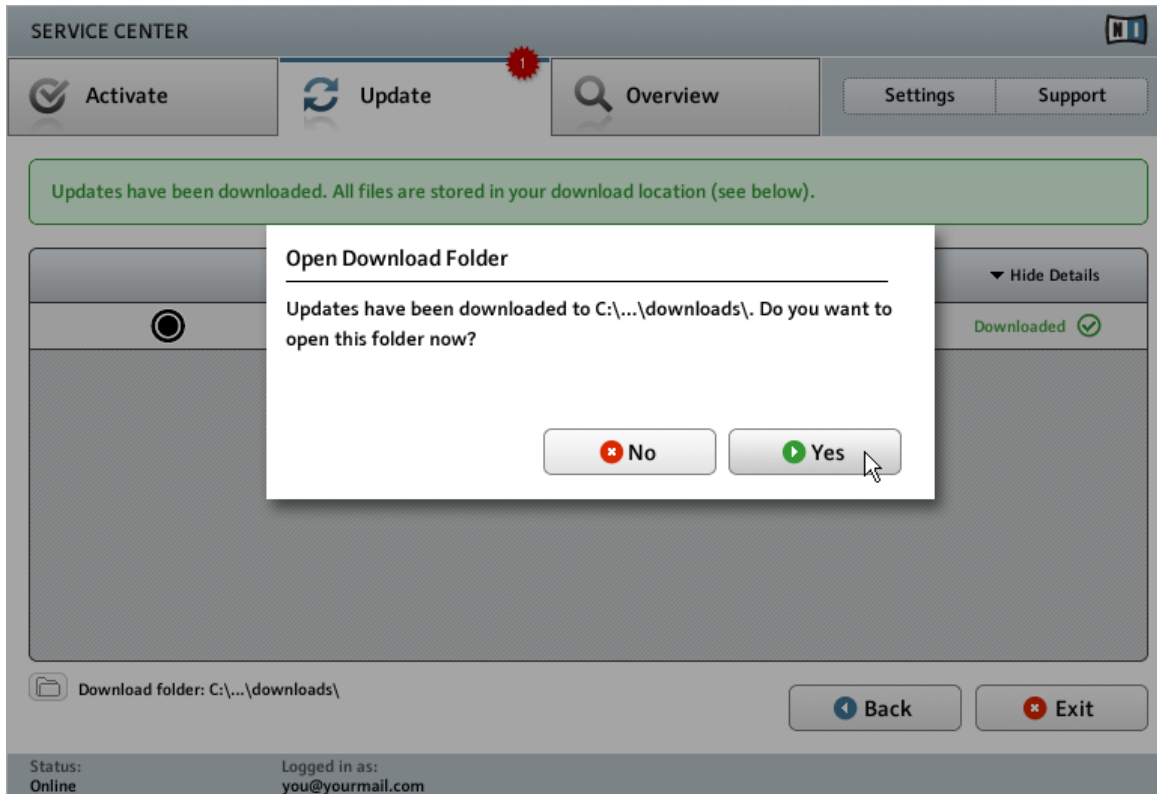
4.2.2 Download the Updates



The product update is in progress.

Depending on the file size and the speed of your internet connection, downloading the files may take a while. We strongly recommend that you always install the latest updates.

4.2.3 Open Your Download Folder



Service Center confirming all updates were downloaded, and offering to open the download folder.

After all files have been downloaded successfully, you will be asked to open the download folder.

- ▶ Click [Yes](#) to open the download folder.
- ▶ After the download folder has opened, you can quit Service Center by clicking [Exit](#).

4.2.4 Install Updates

1. Launch the first installer file from the download folder.
2. Follow the instructions of the Installation Wizard.
3. Proceed until you have installed all updates.

4.3 Activating Your Product Offline

If the computer you want to use Native Instruments products on is permanently not connected to the internet, you can activate the products utilizing the Offline activation procedure. Note that you will need a second computer that is connected to the internet.

4.3.1 Start the Offline Activation

SERVICE CENTER

Internet connection

Service Center was unable to establish an internet connection. How do you wish to proceed?

Try connecting to the internet again

Make sure that your computer is connected to the internet.

Retry

Use a proxy server to connect to the internet

Host

Port

Proxy

Continue without connecting to the internet

Please note: You will have to transfer an Activation Request File to a computer with internet access.

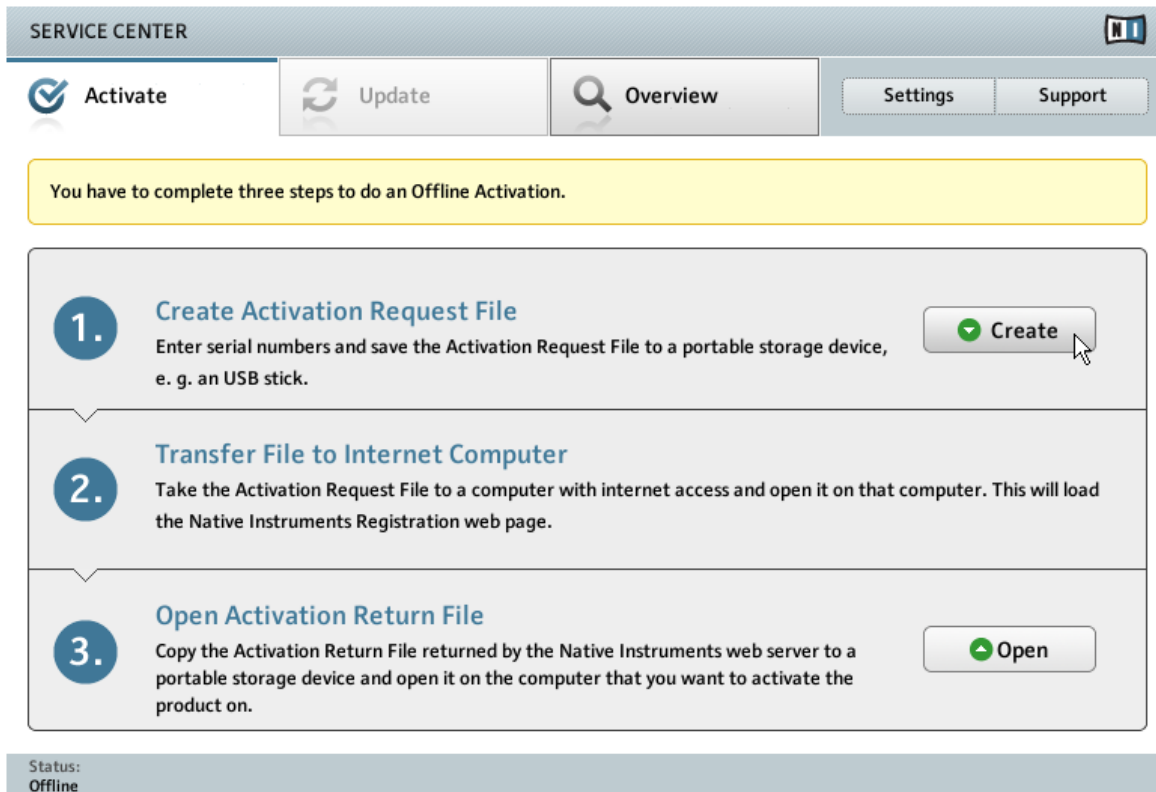
Offline

Status:
Pending...

The internet connection screen of Service Center.

1. Start Service Center. If no internet connection is detected, you will be redirected to the [Internet connection](#) screen pictured above.
2. In the [Continue without connection to the internet](#) area at the bottom of the screen, click [Offline](#). You will be forwarded to the [Activate](#) screen.

4.3.2 Create the Activation Request File



The offline activation screen of Service Center.

- On the [Activate](#) screen, click [Create](#). The [Activate](#) screen will display fields in which to enter the serial number (see next step).

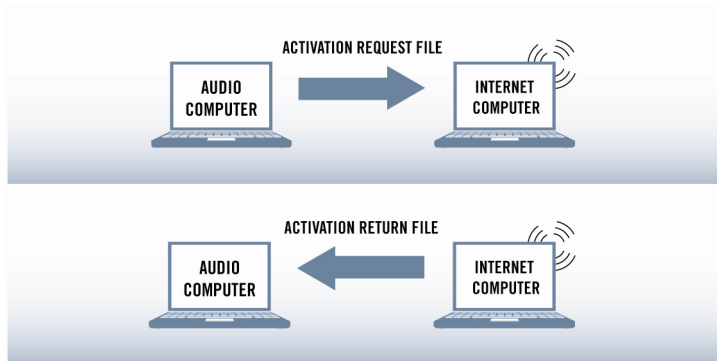
4.3.3 Enter the Serial Number

The screenshot shows the 'SERVICE CENTER' interface. At the top, there's a navigation bar with 'Activate' (checked), 'Update', 'Overview', 'Settings', and 'Support'. Below this is a yellow instruction box: 'Enter the serial numbers for the products you want to activate.' The main area is a window titled 'NI PRODUCT' with a large empty text field for serial numbers. Above the field are five small input boxes, the last of which is highlighted. At the bottom right of the window are 'Back' and 'Create' buttons. A status bar at the very bottom shows 'Status: Offline'.

The product activation screen of Service Center.

1. Enter the software serial number in the number field. The software serial number is located on the registration flyer, which you can find in your TRAKTOR KONTROL S2 product box.
2. Click [Create](#) to save the Activation Request File (ActivationRequestFile.html). A Save File dialog will open and let you select a target folder.
3. Save the Activation Request File to the desired target folder.

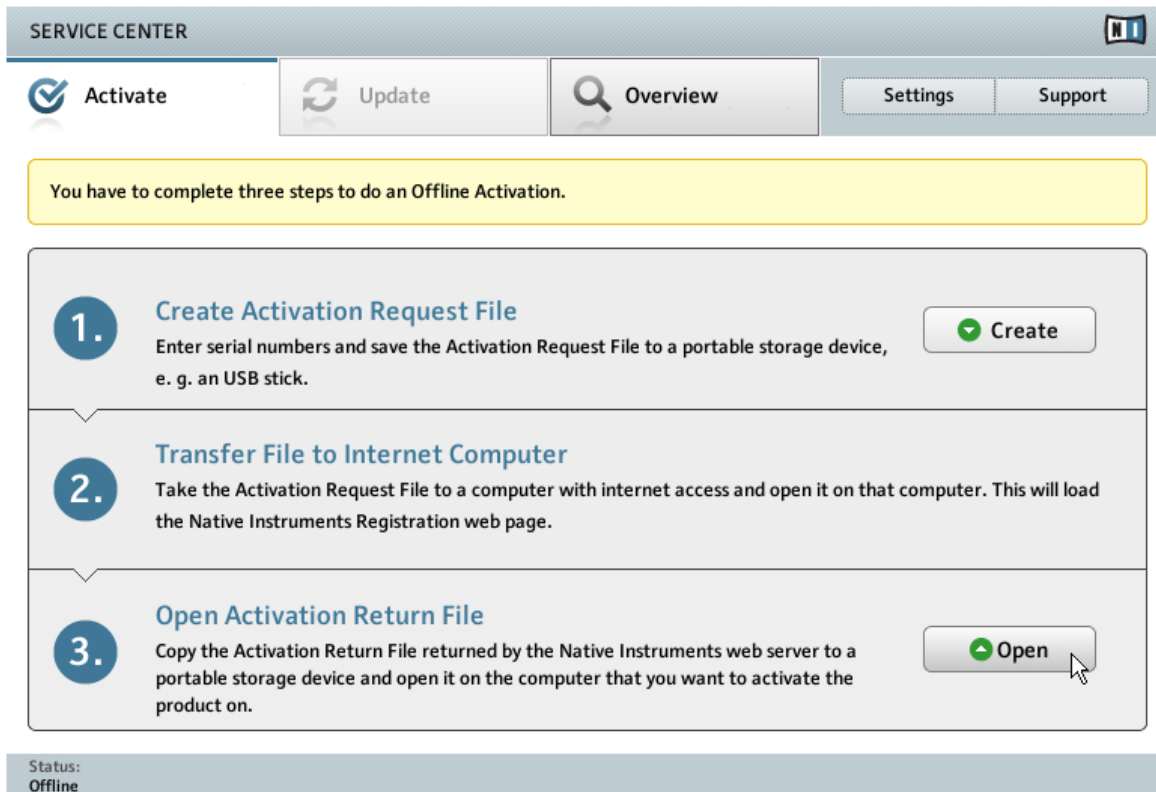
4.3.4 Transfer the Activation Request File



The offline activation procedure.

1. Copy the Activation Request file to a portable storage device and transfer it to a computer with internet connection.
2. Open the Activation Request file by double-clicking it.
3. Follow the instructions on the Service Center product activation web page. As a new Native Instruments user you will need to create a new account before you can log in.
4. Transfer the Activation Return file back to your audio computer.

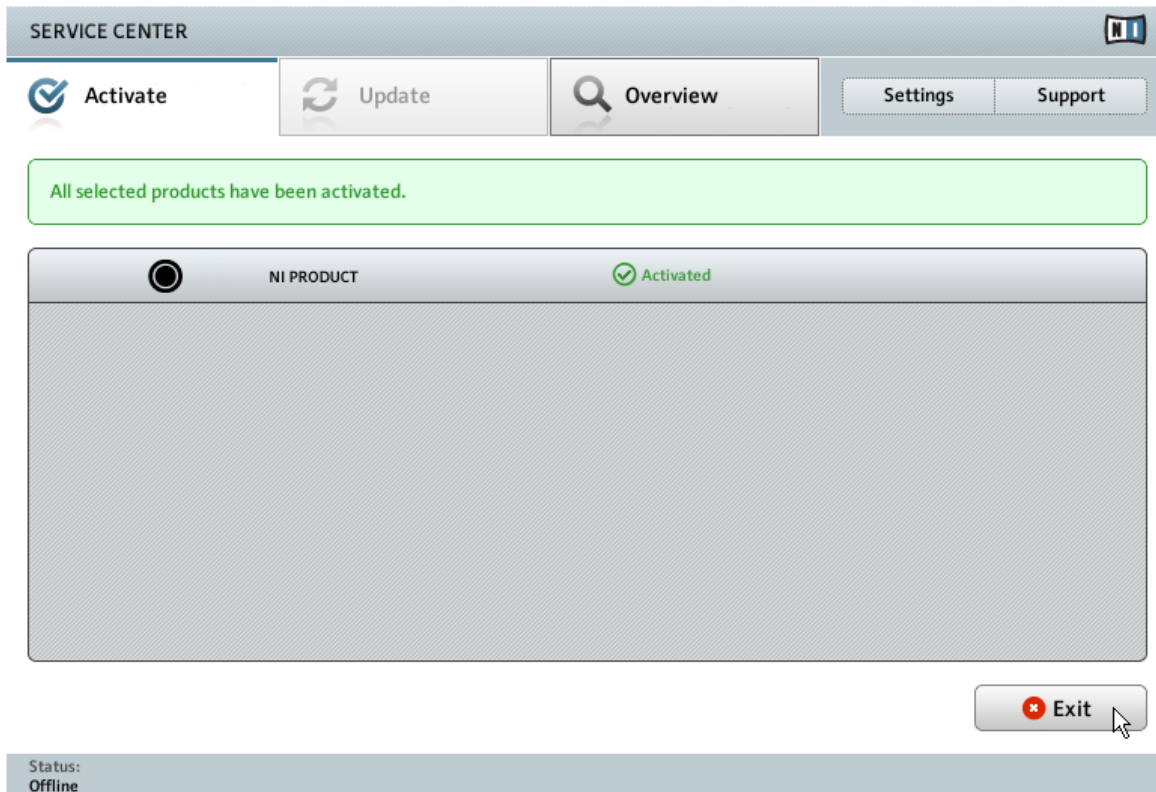
4.3.5 Open the Activation Return File



The offline activation screen of Service Center.

1. On your audio computer, start Service Center again. In the [Continue without connection to the internet](#) area at the bottom of the screen, click [Offline](#).
2. Select the [Activate](#) tab and click [Open](#) to load the Activation Return file.

4.3.6 Finish the Offline Activation



Service Center confirming the product activation.

After you have opened the Activation Return file, Service Center confirms that the product has been activated successfully. You can quit Service Center by clicking [Exit](#).

- To obtain updates for your products, log in under www.native-instruments.com/updates, using your Native Instruments user account information. Download all relevant updates from the Personal Update Manager to your internet computer, transfer them to your music computer utilizing portable storage media, and install them.

5 Setting Up Your TRAKTOR KONTROL S2 System

5.1 Connecting the TRAKTOR KONTROL S2 Controller

- ▶ Make sure that you have installed the TRAKTOR KONTROL S2 hardware driver before you connect the controller to your computer! For this, please follow the instructions specific to your operating system in chapter [↑3, Software Installation](#).
- ▶ Attach the TRAKTOR KONTROL S2 controller directly to a USB port on your computer. If connected to a USB hub, the device may not work correctly!

5.1.1 Prepare the Power Supply

The power supply comes with four different adapters. Before you can use the power supply, you need to attach the adapter that fits the power outlets available in your country/region.

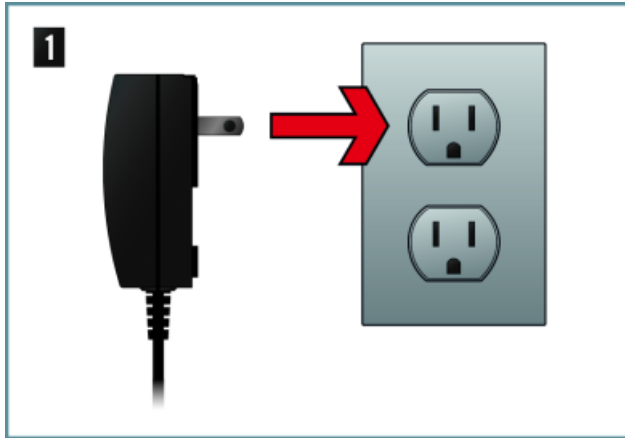


Preparation of the power supply.

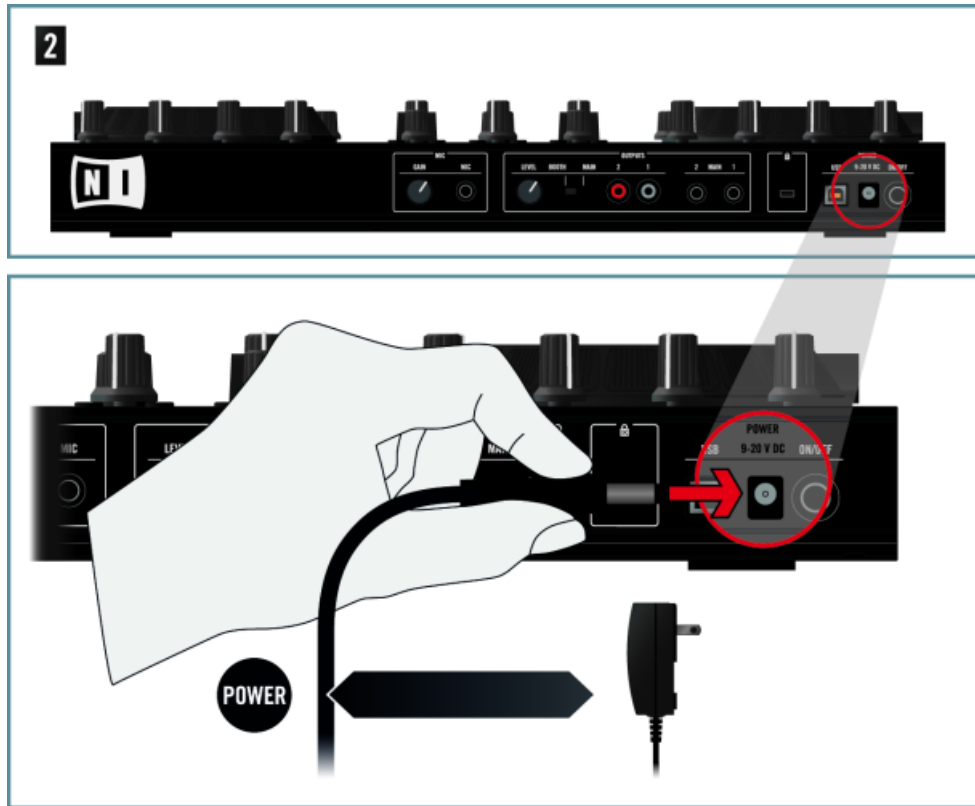
- ▶ Insert the fixture of the matching adapter into the corresponding part on the power supply, then press the adapter carefully against the power supply until a click confirms the adapter has snapped into place.

5.1.2 Connect the Power Supply

1. Connect the power supply to a power outlet.



2. Connect the plug at the end of the power supply's cable to the power supply connector (labeled POWER) on the rear panel of your TRAKTOR KONTROL S2.



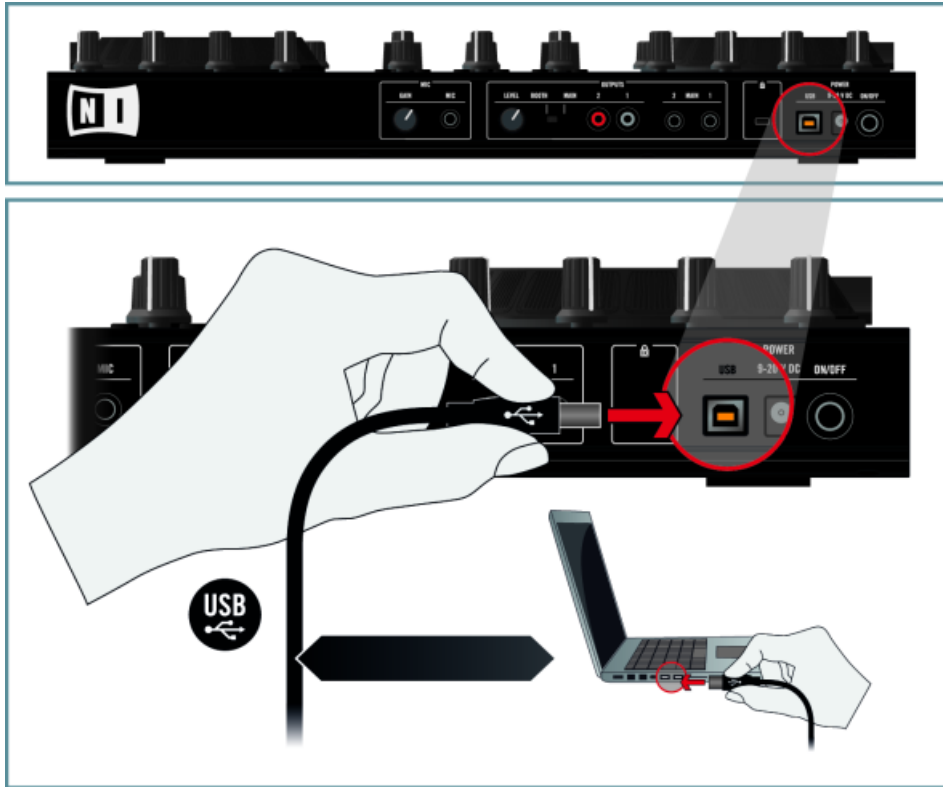
5.1.3 Connect the TRAKTOR KONTROL S2 Controller to Your Computer



Before connecting the controller to your computer, make sure it is in a stable playing position. Turning the controller on its head while it is connected to your computer can cause decalibration of the jog wheels, which is indicated by constantly flashing Load buttons. Placing the device back in the upright position and switching it on and off will reset the jog wheels to the correct state. In the unlikely event that the jog wheels still do not respond as expected after power cycling, recalibrating the jog wheels manually might become necessary. For further info on calibration, please refer to the separate Jog Wheel Calibration Guide in the Documentation subfolder of the TRAKTOR program folder.

To connect the controller to your computer:

1. Attach the “device end” of the included USB cable to the USB socket on the rear panel of your TRAKTOR KONTROL S2.
2. Attach the “computer end” of the USB cable to an available USB 2.0 port on your computer.



The TRAKTOR KONTROL S2 controller will not work when it is connected to a USB 1.1 port — a USB 2.0 port is required!



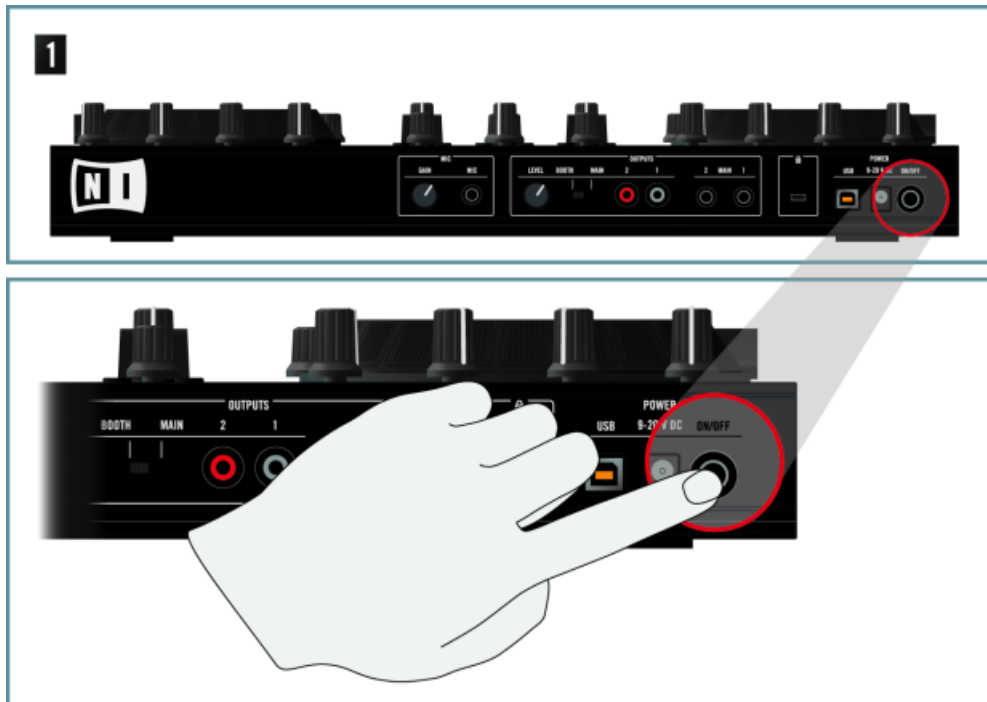
If possible, do always use the USB cable provided with the S2 box to operate your unit. Longer or lower quality USB cables may not transfer sufficient power to the S2, which may lead to performance issues. For proper operation, it is also advised to always connect the power supply.



If possible, do always use the USB cable provided with the S2 box to operate your unit. Longer or lower quality USB cables may not transfer sufficient power to the S2, which may lead to performance issues. For proper operation, it is also advised to always connect the power supply.

5.2 Turning On the TRAKTOR KONTROL S2 Controller

- On the rear panel of your TRAKTOR KONTROL S2 controller, press the power switch (labeled ON/OFF).



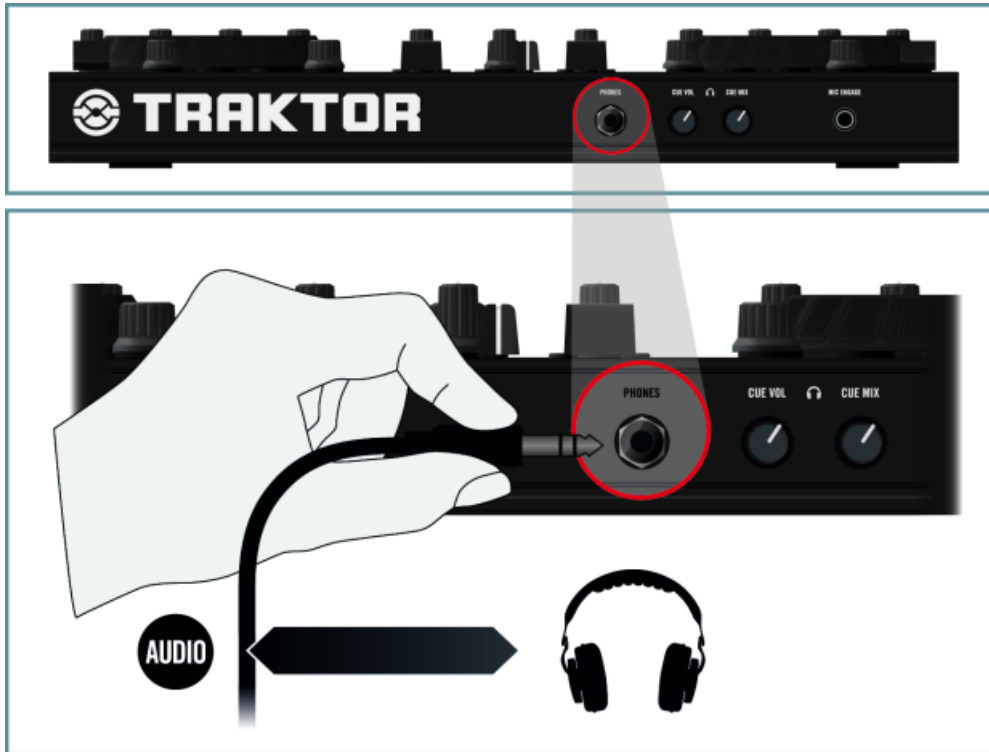
→ On the TRAKTOR KONTROL S2, the USB indicator should be lit now.



5.3 Connecting Headphones

1. Turn the CUE VOL control knob on the front panel to the left end stop to set the output volume to minimum.

2. Connect your headphones to the headphones socket (PHONES).



With DC power unplugged and USB connected, the controller will already transmit a signal to the main and headphone outputs. Be aware that plugging in DC power will boost the controller's headphone output signal significantly. It is therefore strongly advised to adjust the output level with DC power plugged in.

5.4 Connecting the Amplification System

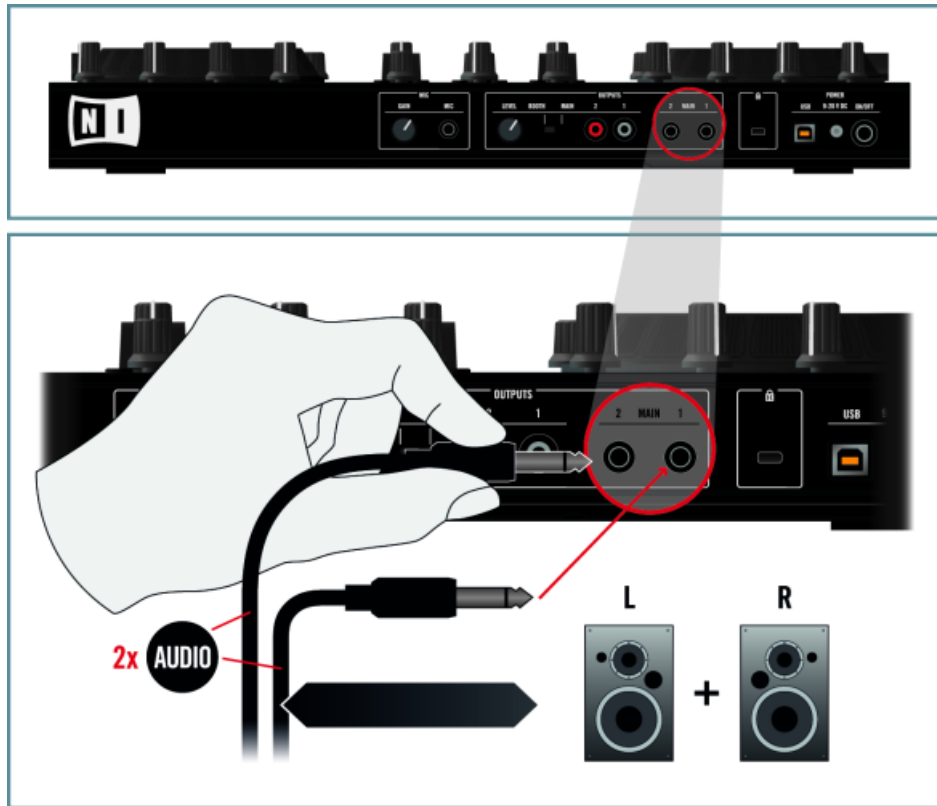
Switch off your amplification system (active speakers or power amplifier) before you proceed.

1. On the top panel of the S2, turn the MAIN LEVEL knob fully counter-clockwise.



2. Connect Main Output socket 1 (MAIN 1) on the rear panel of your TRAKTOR KONTROL S2 controller to the left channel of your amplification system and Main Output 2 (MAIN 2) to the right channel. Depending on the connector types your amplification sys-

tem is equipped with, you can choose to connect it to either the RCA (unbalanced), or 1/4" (balanced) output sockets on the S2.



6 Soundcheck

Now it's time to start using your TRAKTOR KONTROL S2 system!

6.1 Starting the TRAKTOR Software

After successful installation, you will find the TRAKTOR software installation folder on your hard drive, containing the application and the documentation resources. If you installed using the default settings, these folders can be found here:

- **Mac OS X:** *Macintosh HD/Applications/Native Instruments/Traktor 2/*
- **Windows:** *C:\Program Files\Native Instruments\Traktor 2*

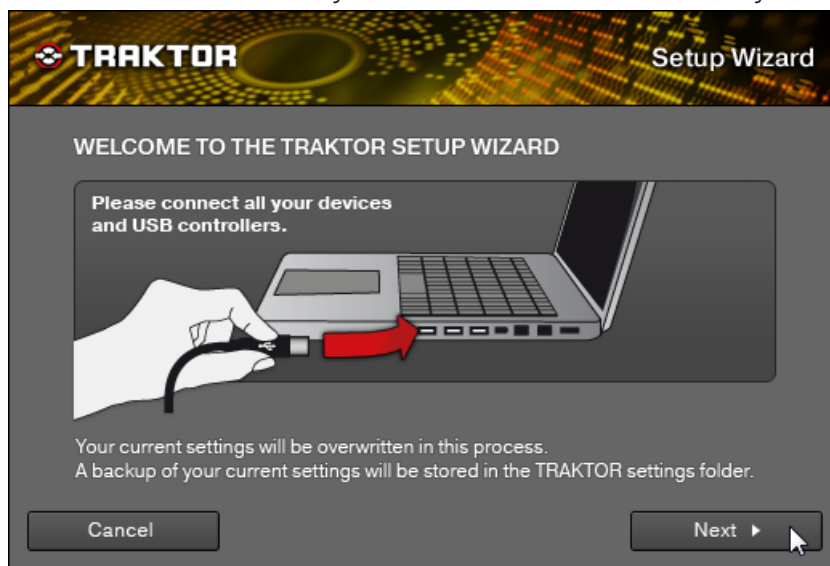
To start the TRAKTOR software:

- ▶ Double-click the application icon in the installation folder or, on Windows, the shortcut created during the installation procedure (for example on your desktop).
- TRAKTOR opens up on your computer screen.

6.2 Configuring TRAKTOR with the Setup Wizard

When opening TRAKTOR for the first time, the software will present you with a Setup Wizard. This piece of software helps you to configure the TRAKTOR software for use with your S2 controller. In case the Setup Wizard does not appear after starting the software, you can always open it via *Help > Start Setup Wizard*. Select the following settings from the Setup Wizard:

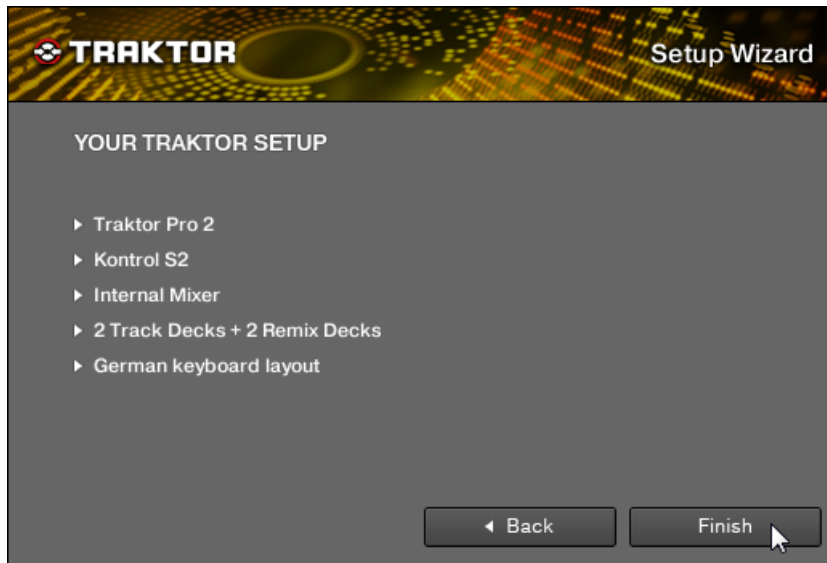
1. Click [Next](#) to confirm that your S2 controller is connected to your computer.



2. Select *2 Track Decks + 2 Remix Decks* from the setup menu. This is the only configuration setting your S2 will work properly with when controlling TRAKTOR.



- Click **Finish** to confirm your configuration. (The keyboard layout will always reflect the input settings of your computer.)



- After finishing the Setup Wizard, TRAKTOR is set up with the two Track Decks A and B, and the two Remix Decks C and D. The software is now ready to be used with your TRAKTOR KONTROL S2 controller.

6.3 Loading a Track Into a Deck



If you have a music collection you want to play using the TRAKTOR KONTROL S2 system, see the TRAKTOR KONTROL S2 manual for details on how to import your music into the TRAKTOR software.

At the bottom of the TRAKTOR software window, you can see the Browser holding a list of demo tracks. Let's choose one of them and load it on to Deck A (the Deck sitting at the top left of the user interface) using the TRAKTOR KONTROL S2 controller:

1. Turn the BROWSE encoder located toward the top of your TRAKTOR KONTROL S2 controller to select the desired track in the list.



2. Below the BROWSE encoder, press the LOAD button A to load the selected track into TRAKTOR's Track Deck A (which equals the left Deck on your controller).



→ On your screen, you can see the waveform of the loaded track appearing in Deck A, along with the track info in the Deck Header.

6.4 Playing the Track on Your Speakers

On your TRAKTOR KONTROL S2 controller, do the following:

1. At the bottom of the Mixer, pull the crossfader all the way to the left.
2. Press the PLAY button at the bottom of the left Deck:



→ On your computer screen, you should see Deck A starting playback and the waveform scrolling. On your S2 controller, look at the Mixer: you should now see activity on the channel meter of channel A, following the track's level.

If you don't hear your track playing yet, remember that you turned all volume controls down at a previous step to avoid overly loud signals coming out of your headphones and speakers! Therefore, you need to set the headphone and speaker volumes to a comfortable listening level first:

1. Set the EQ knobs on channel A of the Mixer to their center detent position.
2. Switch on your amplification system and carefully turn up its volume. Then turn the MAIN LEVEL knob on your TRAKTOR KONTROL S2, until you can control the overall volume by turning the MAIN LEVEL knob only. You may need to adjust the volume controls later on. To gain precise control of the overall volume, set the amplification system to a level that

lets you max out the MAIN LEVEL knob's control range without exceeding a reasonable listening level.



3. On the Mixer of your S2, raise the channel fader of channel A to an appropriate value and check that the crossfader is set all the way to the left.
- You should now hear the music playing on your speakers.

6.5 Pre-listening to a Second Track on Your Headphones

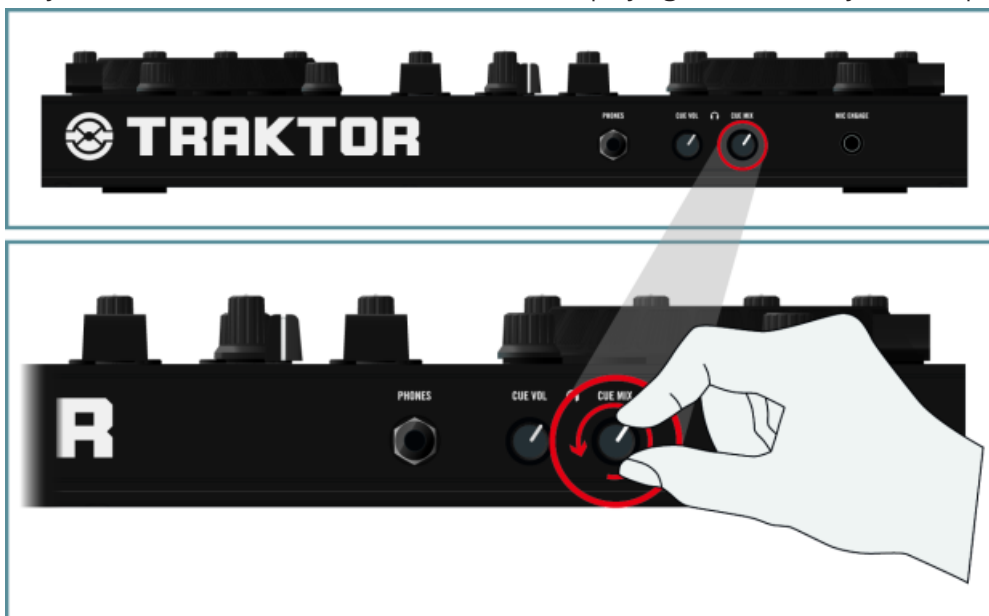
When DJing, you will need to pre-listen to tracks before you play them over the PA system. To set up your headphones for pre-listening to tracks, you need to define which of the Decks you want to listen to:

1. While the track in Deck A keeps playing on the speakers, load a track into Deck B as described for Deck A — but this time using the LOAD button B below the BROWSE encoder.
2. Press the PLAY button on the right Deck of your TRAKTOR KONTROL S2 controller to start the playback on Deck B.

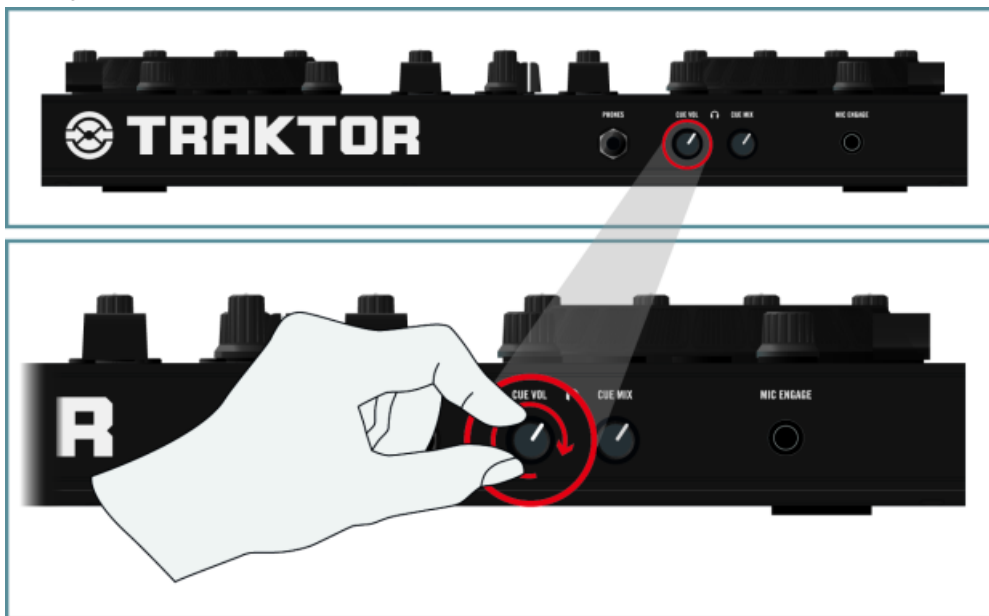
3. In the Mixer section, press channel B's CUE button to select Deck B for pre-listening.



4. On the front panel of your TRAKTOR KONTROL S2 controller, turn the CUE MIX knob fully counter-clockwise (this will send the track playing in Deck B to your headphones).



5. Slowly turn the CUE VOL knob clockwise.



→ You should now hear the track playing in Deck B on your headphones, while the track in Deck A is playing on the speakers.

This is how the CUE MIX knob works:

- Left end stop: CUE signal only
- Center position: 50/50 mix of CUE and MAIN signals
- Right end stop: MAIN signal only

7 How to Proceed

7.1 Documentation Resources

7.1.1 PDF Manuals

The **documentation** is available in PDF format and located within the TRAKTOR installation directory on your hard drive. You can also access these documents from the application's [Help](#) menu.

In addition to this guide, TRAKTOR provides the following documents:

- The **TRAKTOR KONTROL S2 Manual** explains basic workflows like how to import your music collection, how to mix tracks, how to use the Remix Decks and other features of TRAKTOR KONTROL S2 with TRAKTOR PRO 2. Furthermore, it provides you with a complete reference of the TRAKTOR KONTROL S2 controller. This is your next step in learning to use the TRAKTOR KONTROL S2 system!
- The **TRAKTOR 2 Manual** is the primary information resource concerning the TRAKTOR software. It provides thorough descriptions of all user interface elements, options, tools, and sound processing modules built into the application. You can use it, both as a reference manual and a thorough guide for working with the application.

7.1.2 Overview Poster

In the product box, you will also find a double-sided Overview Poster depicting the TRAKTOR KONTROL S2 hardware controller: one side is an overview of the main areas and their functionality, while the other side provides you with a description of every control element found on the Decks and FX Units. Use this poster as a quick reference when working with your TRAKTOR KONTROL S2 so you don't have to open the manual PDF file each time you feel uncertain about a particular control element.

7.1.3 Video Tutorials

You can find a number of video tutorials on our website under the following URL:

<http://www.native-instruments.com/s2tutorials>.

You'll learn how to achieve common tasks in your TRAKTOR KONTROL S2 system. We recommend that you follow along with these instructions with TRAKTOR simultaneously running on your computer.

7.2 Support

7.2.1 Knowledge Base / Readme / Online Support

- Open the Service Center application and click on the [Support](#) button in the upper right corner. Here you will find direct links to the Native Instruments **Online Knowledge Base** and the **Online Support Form**.

The Online Knowledge Base gathers useful information about your Native Instruments product and can be of great help to solve possible issues you may encounter when working with Native Instruments products.

If no Knowledge Base entry matches your problem, or if the matching entry does not solve the problem, you can use the Online Support Form to contact the Technical Support team at Native Instruments. The Online Support Form will ask you to enter information about your hardware and software setup. This information is essential for our support team to be able to provide you with quality assistance.

When communicating with the Native Instruments support team, keep in mind that the more details you can provide about your hardware, your operating system, the version of the software you are running, and the problem you are experiencing, the better they will be able to help you. In your description, you should mention:

- How to reproduce the problem
- What you have already tried to fix the problem
- A description of your setup, including all hardware

- The brand and specifications of your computer



When installing new software or software updates, a Readme file is included that contains late breaking news and new information that was not yet included in the documentation. Please open and read this Readme file before contacting Technical Support.

7.2.2 Forum

In the Native Instruments User Forum you can discuss product features directly with other users and with experts moderating the forum:

<http://www.native-instruments.com/forum>.

7.3 Updates

Whenever you encounter problems, it is recommended that you first download and install any available software updates. Updates are released regularly to fix known problems and to continuously improve the software. The version number of your software is displayed in the [About](#) dialog for any Native Instruments application. This dialog can be opened by clicking on the NI logo in the upper right corner of the user interface. Alternatively, you can find the version numbers of all installed Native Instruments applications when showing the details for an application within the [Overview](#) page of the Service Center. Updates are available on the [Update](#) tab in Service Center or on our website under: <http://www.native-instruments.com/updates>.

8 Troubleshooting and FAQ

This section contains some of the most frequently asked questions and answers along with references to Knowledge Base articles for additional details. In order to find an article, please visit the Native Instruments website, navigate to the Knowledge Base in the Support section and enter the article number in the search field.

8.1 Installation Folder Not Found by an Update Installer

If you have manually moved the location of a Native Instruments application on your hard drive, the installer, upon attempting to run an update, will display an error message and abort the installation. You can correct the application path in Service Center from the [Overview](#) page. If an application cannot be found, a [Locate](#) button will appear on this page. Click this button and browse to the actual location of the application.

8.2 User Account Control and Internet Security

User Account Control (UAC) and any installed Internet security or anti virus software should temporarily be disabled for installing the TRAKTOR software, as they may interfere with the installation. If you are concerned about the safety of your files, disconnect your computer from the network during installation.

1. To open the UAC configuration options in Windows 7 or Vista, click on the Start button from the task bar, then enter UAC in the search field and press [Enter]. Disable the check box for User Account Control in Windows Vista, or set the UAC slider all the way to the bottom in Windows 7.
2. Check the Internet security or anti virus software's documentation for instructions on how to temporarily disable their protection services.
3. Once the installation is complete, make sure to re-enable User Account Control and your Internet security / anti virus software.

8.3 Audio Clicks and Drop-outs when Playing Tracks

If you hear clicks and/or drop-outs when a track is playing, you might need to increase the latency setting of your TRAKTOR KONTROL S2. To learn how to do this, please refer to the **TRAKTOR KONTROL S2 Manual**, which thoroughly describes the Traktor Kontrol S2 Control Panel — the tool that allows you to adjust the audio interface settings.

8.4 More Troubleshooting Resources

If none of the suggestions in this chapter covers your problem, the TRAKTOR KONTROL S2 Manual provides more detailed information on the topics discussed in this Setup Guide. Also check if the Knowledge Base has an answer: <http://www.native-instruments.com/knowledge/>.